

Create a Symbolic link on 2008

donderdag 28 juni 2012 18:15 administrator



Today I was challenging a very common situation but never took the time to figure this out. A harddisk is out - nearly - of space but on the server itself - or another server - there is plenty of space.

Users have a mapped drive. for ex. **W:** this drive is a mapping to a dfs-share. Lets say <\\int.zaan.it\dfsroot\groupdata>, this dfs-share is targeting to a server-share <\\w2k8-1\data\groupdata>

On Fileserver1 the data-share is placed on D:\data, this D-Drive is out of space. I have added a new drive - via iScsi - to the server.

There are several ways to give the groupdata extra space.

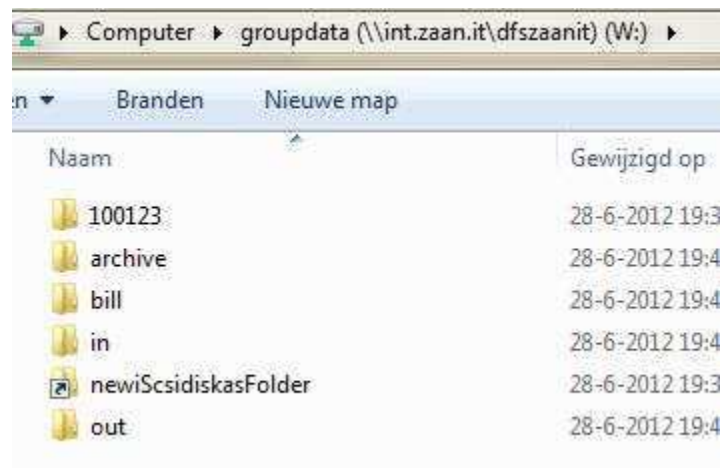
1 - Mount the new disk to an empty NTFS folder in D:\data\groupdata, give it a logical name and move some data to disk new folder. On the image below the dir-listing on the server.

```

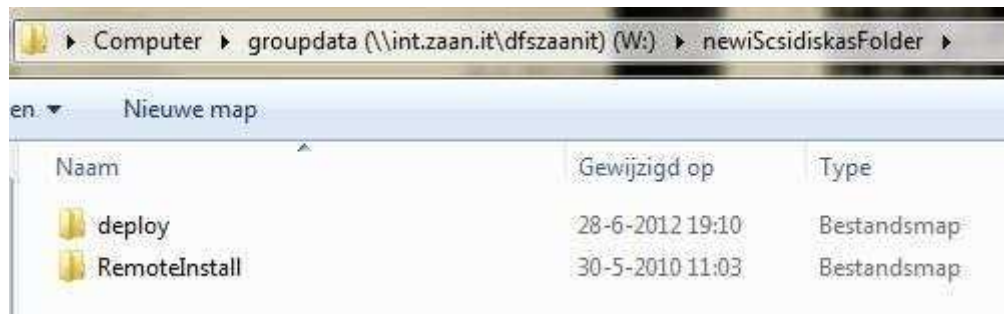
Directory of D:\data\groupdata
28-06-2012  19:40    <DIR>          .
28-06-2012  19:40    <DIR>          ..
28-06-2012  19:39    <DIR>          100123
28-06-2012  19:40    <DIR>          archive
28-06-2012  19:40    <DIR>          bill
28-06-2012  19:39    <DIR>          in
28-06-2012  19:39    <JUNCTION>    newiScsidiskasFolder [??\Volume{07eaa954-6b
39-11df-afeb-000c294a94c1}\]
28-06-2012  19:40    <DIR>          out

```

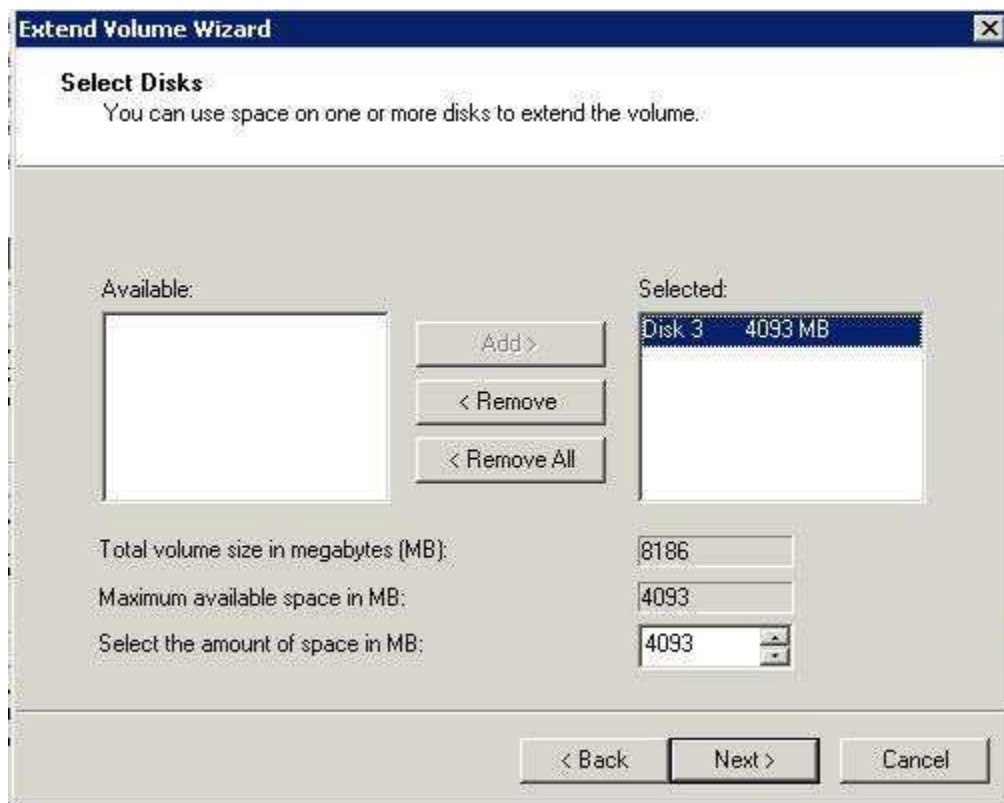
Below this folder "newiScsidiskasFolder" as seen from the client in Explorer. As a shortcut



When going into the newiScsidiskasFolder the redirection to the real folder on the server is hidden from the user.

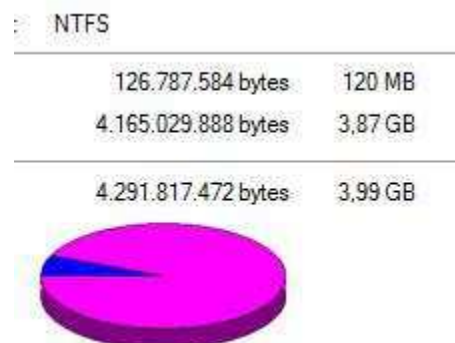


2 - Extend the Volume. A real nice feature! Extend the full disk with unallocated space on the server. On the server, diskadmin... Extend Volume...

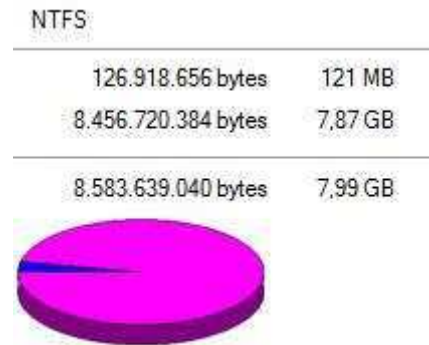


The operation you selected will convert the selected basic disk(s) to dynamic disk(s). If you convert the disk(s) to dynamic, you will not be able to start installed operating systems from any volume on the disk(s) (except the current boot volume). Are you sure you want to continue?

From the user perspective.
Before:



After - On the fly ! , 4 Extra GB's, real cool :

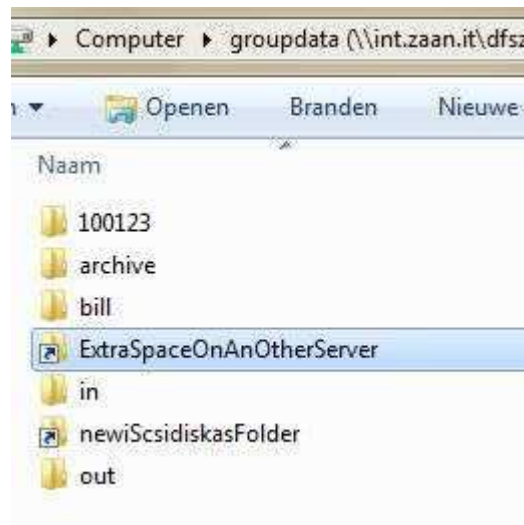


I have a spanned disk now, but this doesn't feel good. I know what I'm doing, both the disks are on a raidset (5), and the change of a failure and data loose is greater. From the user perspective the disk extend is the best.

3 - Link a folder (another server) on a disk with lots a space to a folder on the full drive. Use the command mklink

```
D:\data\groupdata>mklink /d ExtraSpaceOnAnOtherServer \\netboxfs-3\s
symbolic link created for ExtraSpaceOnAnOtherServer <<===>> \\netboxfs-3\s
```

From the user perspective



But when the user goes into this directory, in default configuration the error "The symbolic link cannot be followed because its type is disabled." appears.



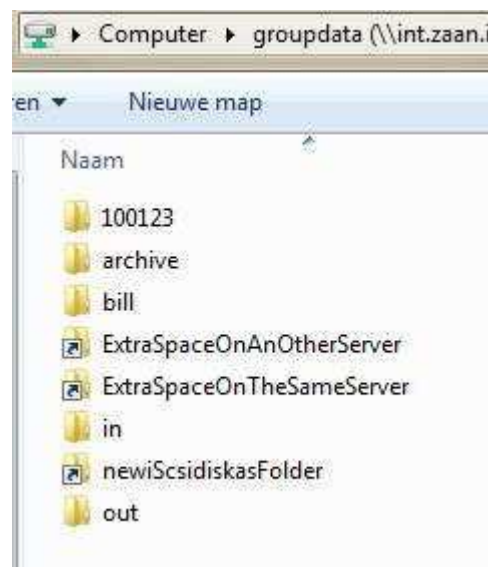
To solve this, on the client use the command (do a GoogleSearch for an explanation):
fsutil behavior set SymLinkEvaluation L2L:1 R2R:1 L2R:1 R2L:1



4 - Link a folder (on the same server) on a disk with lots a space to a folder on the full drive. Use the command mklink

```
D:\data\groupdata>mklink /J ExtraSpaceOnTheSameServer E:\ExtraData
Junction created for ExtraSpaceOnTheSameServer <<==>> E:\ExtraData
```

From the users perspective



So you see now, many ways to give "Air" to your hard working employees!



I

Laatst aangepast op vrijdag 29 juni 2012 09:52

